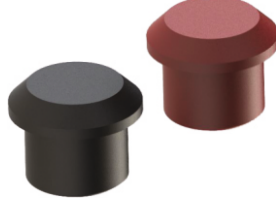


PROTECTION ACCESSORIES



PROTECTION TAPS

EN	TR
Material Polyamide 6	Hammaddesi Polyamide 6
Temperature range -20 °C +100 °C	Isiya direnci -20 °C +100 °C



O-RING

EN	TR
Material Nitrile rubber 70 shore A	Hammaddesi Nitril kauçuk 70 shore A
Temperature range -30 °C +100 °C	Isiya direnci -30 °C +100 °C



KORUMA TAPASI

PG Thread	M Thread	Black Code	Red Code
		■ RAL 9005	■ RAL 3020
PG 7	M 12 x 1,5	PTB 01	PTR 01
PG 9	M 16 x 1,5	PTB 02	PTR 02
PG 11	M 16 x 1,5	PTB 03	PTR 03
PG 13,5	M 20 x 1,5	PTB 04	PTR 04
PG 16	M 20 x 1,5	PTB 05	PTR 05
PG 21	M 25 x 1,5	PTB 06	PTR 06
PG 29	M 32 x 1,5	PTB 07	PTR 07
PG 36	M 40 x 1,5	PTB 08	PTR 08
PG 42	M 50 x 1,5	PTB 09	PTR 09
PG 48	M 63 x 1,5	PTB 10	PTR 10

O-RING

Inner Diameter mm	Thickness mm	Gland Size	Code
8	1,5	M 10	80015
9	1,5	PG 7 / M12	90015
11	1,5	PG 9 / M16	11015
13	1,5	PG11	13015
16	1,5	PG 13,5 / M 20	16015
18	1,5	PG 16	18015
19	2	M 25	19020
22	2	PG 21	22020
26	2	M 32	26020
30	2	PG 29	30020
34	2	M 40	34020
40	2	PG 36	40020
44	2	M 50	44020
48	2	PG 42	48020
53	2	PG 48	53020
56	2	M 63	56020

FLAT WASHER / METRIC

EN	TR
Material TPV	Hammaddesi TPV
Temperature range -20 °C +100 °C	Isiya direnci -20 °C +100 °C



FLAT WASHER / PG

EN	TR
Material TPV	Hammaddesi TPV
Temperature range -20 °C +100 °C	Isiya direnci -20 °C +100 °C



YASSI RONDELA

Code	Metric Size	Inner Diameter	Outer Diameter	Thickness
ZZ/RON01TP	12	11,8	16,9	1,3
ZZ/RNTP-M16K	16	16,0	20,3	1,5
ZZ/RNTP-M16	16-2	16,0	23,0	1,5
ZZ/RNTP-M20K	20	20,0	23,0	1,5
ZZ/RNTP-M20	20-2	19,5	26,0	1,5
ZZ/RNTP-M25	25	25,0	32,0	1,5
ZZ/RNTP-M32	32	32,0	42,0	1,5
ZZ/RNTP-M40	40	40,0	50,0	2,0
ZZ/RNTP-M50	50	50,0	59,0	2,0
ZZ/RNTP-M63	63	63,0	74,0	2,0
ZZ/RNTP-M75	75	75,0	89,0	2,0

YASSI RONDELA

Code	PG Size	Inner Diameter	Outer Diameter	Thickness
ZZ/RON01TP	PG-7/M12	11,8	16,9	1,3
ZZ/RON02TP	PG-9	14	18	1,5
ZZ/RNTP-PG9/13,5	PG-9/PG-13,5	14	22	1
ZZ/RON03TP	PG-11	17	22	1
ZZ/RON04TP	PG-13,5	20,5	26	1,3
ZZ/RON05TP	PG-16	21,5	28	1
ZZ/RON06TP	PG-21	27	35	1,5
ZZ/RON07TP	PG-29	34,5	42	1,5
ZZ/RON08TP	PG-36	47,5	57	1,5
ZZ/RON09TP	PG-42	54	67	1,5
ZZ/RON10TP	PG-48	59,5	69	2